



Teras Offshore

A subsidiary of Ezion Holdings Limited

TERAS 003

122M Deck/Cargo Barge



Specifications

Length Overall: 122.00 m

Breadth: 36.59 m

Depth: 7.62 m

Designed Draft: 5.80 m

Deck Strength: 25 MT/M2

GRT / NRT: 9029 / 2708

Deadweight: 18,877 T

Call 65.6309.0555
Fax 65.6222.7848
Co.Reg.No. 200715754M

Mail 15 Hoe Chiang Road Tower Fifteen #12-05 Singapore 089316
Web www.terasoffshore.com



Teras Offshore

A subsidiary of Ezion Holdings Limited

General Specifications

GENERAL

Port of Registry/Flag	Singapore
Official Number	392183
Class	Lloyd's Register
Notation	+ 100AT Potoon, WDL (25 t/m ²)
Built	2012 / Jiangsu Hong Qiang Marine Heavy Industries, China

TANK CAPACITY:

Ballast Water	Approx. 27720 m ³
----------------------	------------------------------

MACHINERY & EQUIPMENT:

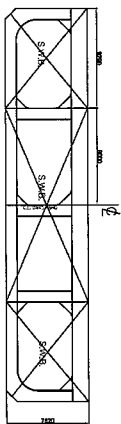
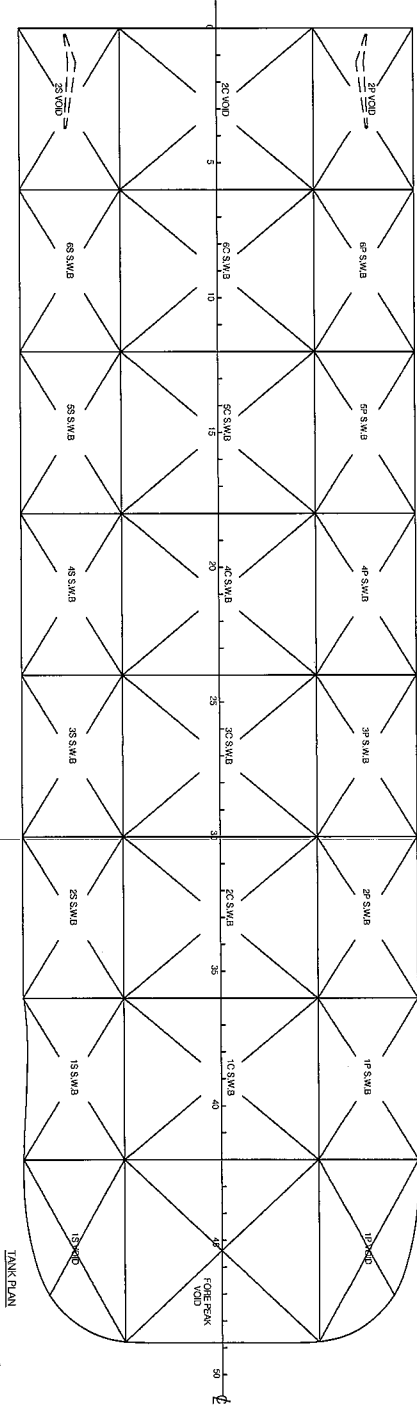
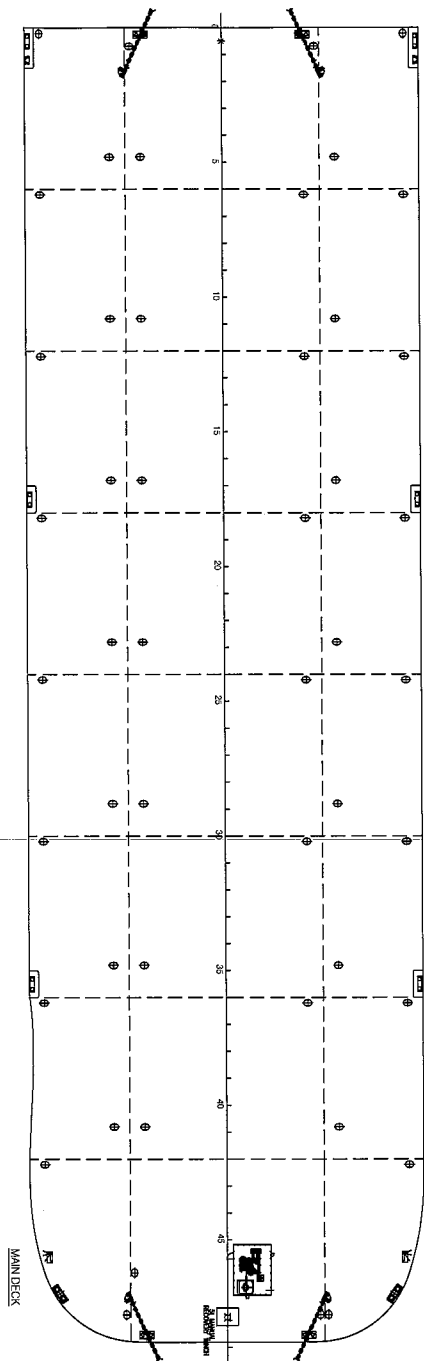
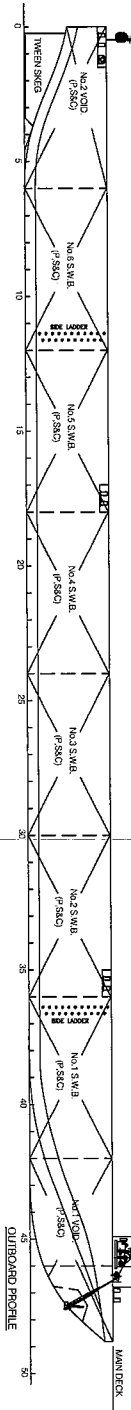
Anchor	1 x 3060 kg Baldt Stockless Anchor
Anchor Chain	1 x 250m Length, Dia. 48 mm Wire Rope, MBL > 1370 kN
Anchor Windlass	1 x SWL 150kN Diesel Engine Driven MCR 61 kW @ 1500 rpm
Recovery Winch	1 x 10T , Diesel Engine Driven
Navigation Light	1 x Solar Powered Anchor Light (360°) 1 x Solar Powered Stern Light (135°) 2 x Solar Powered Side Lights (112.5°)

** This vessel specification is given in good faith & assumed to be correct. Details given are without guarantee.

** Owners reserved the right to amend the specifications without notification.

Call 65.6309.0555
Fax 65.6222.7848
Co.Reg.No. 200715754M

Mail 15 Hoe Chiang Road Tower Fifteen #12-05 Singapore 089316
Web www.terasoffshore.com



TYPICAL TRANS SECTION

PRINCIPAL PARTICULARS:

LENGTH O.A. _____ 122.00 m (400'-0")
 BEAM M/LD. _____ 36.63 m (120'-0")
 DEPTH M/LD. _____ 7.82 m (25'-8")
 FRAME SPACING _____ 2.50 m (8'-2")
 DECK LOADING _____ 25 T/M²
 COMPLIEMENT _____ NIL

SHIP TYPE	COAST GUARD	REGISTRATION NO.	14004
CLASSIFICATION	120M DECK CARGO RANGE	DESIGNER'S REF.	14004
DESIGNER	General Arrangement	CONTRACT NO.	14004
CLIENT	120M DECK CARGO RANGE	CONTRACT DATE	14004
DATE	14004	CONTRACT VALUE	14004