



Teras Offshore
A subsidiary of Ezion Holdings Limited

TERAS 251

Flat Top Ballastable Barge
250ft x 80ft x 16ft



Specifications

Length : 250ft (76.22m)

Breadth: 80ft (24.39m)

Depth Moulded: 16ft (4.88m)

Deck Strength: 20MT/M²

GRT/NRT: 2,293/ 688

Deadweight: 5,000MT

Call 65.6309.0555
Fax 65.6222.7848
Co.Reg.No. 200715754M

Mail 15 Hoe Chiang Road Tower Fifteen #12-05 Singapore 089316
Web www.terasoffshore.com



Teras Offshore
A subsidiary of Ezion Holdings Limited

General Specifications

GENERAL

Port of Registry/Flag	Singapore
Official Number	395486
Class	ABS
Notation	+ A1, Tanks Barge
Built	2009, Yizheng Xinyang Shipbuilding Co. Ltd., China

ADDITIONAL FEATURES:

- * 2 (two) 50 SWL Towing Brackets are fitted on main deck Fwd & Aft
- * 4T-ky-35 hand winch
- * Flush-Deck with Recess Bollards
- * Flushed manholes
- * Flush Access Ladder to Deck
- * Fendering
- * Navigation Light

*** This vessel specification is given in good faith & assumed to be correct. Details given are without guarantee.*

*** Owners reserved the right to amend the specifications without notification.*

Call 65.6309.0555
Fax 65.6222.7848
Co.Reg.No. 200715754M

Mail 15 Hoe Chiang Road Tower Fifteen #12-05 Singapore 089316
Web www.terasoffshore.com

PRINCIPAL DIMENSIONS

LENGTH OVERALL 76.2M (250'-0")
 BREADTH MOULDED 24.384M (80'-0")
 DEPTH MOULDED 4.800M (16'-0")
 DRAFT MOULDED 3.899M

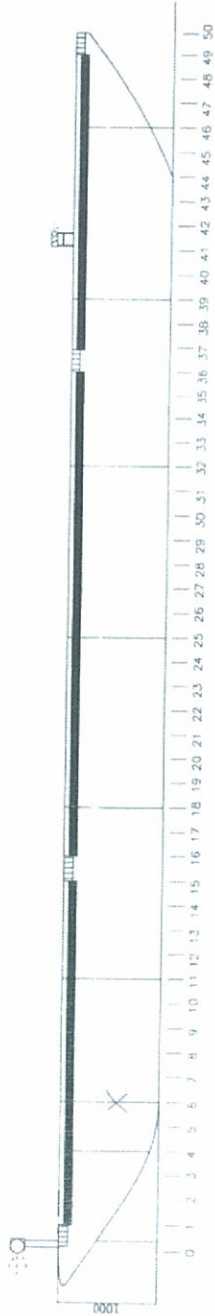
DECK LOADING 20MT/M²
 (SUBJECT TO FREEBOARD ASSIGNMENT)

NOTATION

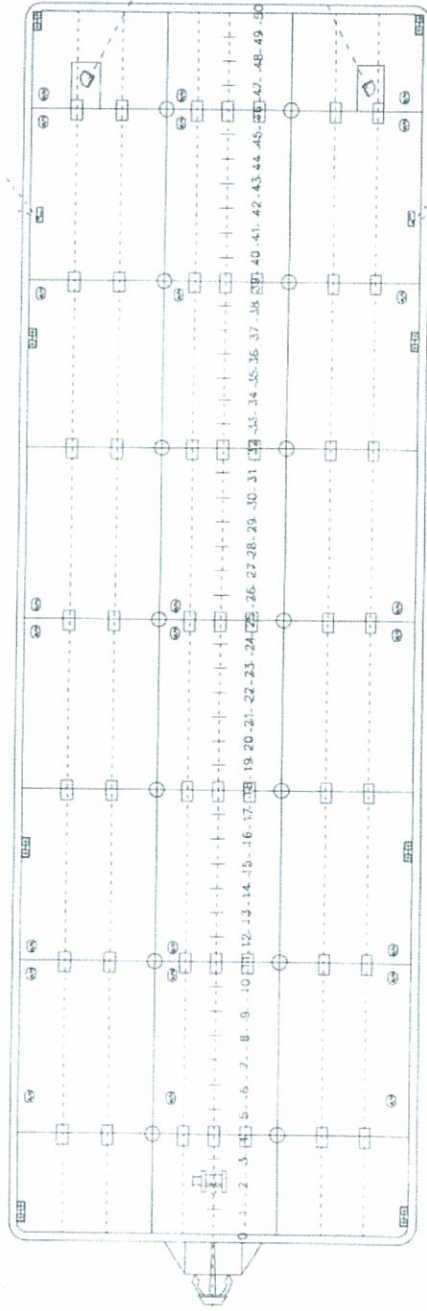
ABS+A1 BARGE



MIDSHIP SECTION



PROFILE VIEW



MAIN DECKPLAN

**All tanks are to carry ballast water.

Yizheng Xinyang Shipbuilding Co., Ltd Hull No. NYC810808

ITEM	DETAILS OF MODIFICATION	BY	DATE

CONSULTANT

PROJECT: 250'X80'X16'
 DECK CARGO/TANK BARGE

TITLE: GENERAL ARRANGEMENT

CLASSIFICATION	HULL NO

DRAWN	CHECKED	SCALE	DRAWING NO.	REV

1:100

NOT RELEVANT
 APPROVED
 11.11.17
 KYC-0101