



Teras Offshore

A subsidiary of Ezion Holdings Limited

TERAS 336

*Flat Top Ballastable Barge
330ft x 100ft x 20ft*



Specifications

Length: 330ft
(100.61m)

Breadth: 100ft
(30.48m)

Depth Moulded: 20ft (6.1m)

Deck Strength: 15 MT/M2

GRT/NRT: 4,814 / 1,444

Deadweight: 11,000MT

Call 65.6309.0555
Fax 65.6222.7848
Co.Reg.No. 200715754M

Mail 15 Hoe Chiang Road Tower Fifteen #12-05 Singapore 089316
Web www.terasoffshore.com



Teras Offshore

A subsidiary of Ezion Holdings Limited

General Specifications

GENERAL

Port of	Singapore
Registry/Flag	
Official Number	391481
Class	Lloyd's Register
Notation	+100A
Built	2005 / Labroy Shipbuilding & Engineering Pte Ltd, Singapore

MINIMUM BREAKING STRENGTH FOR:

SMIT Towing Bracket 80 Tonnes
Towing Fairlead 80 Tonnes

ADDITIONAL FEATURES:

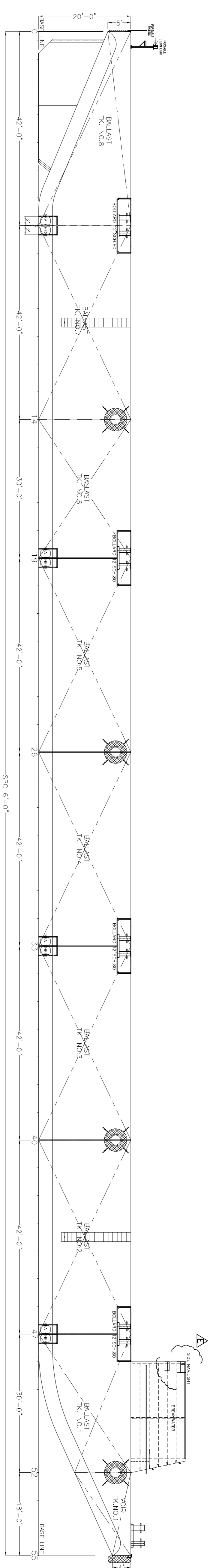
- * Clear Deck Working Area of 305ft (93.0m) by 92ft (28.05m)
- * WEB Longitudinal Frame Spacing of 1.8ft (0.55m) each
- * WEB Transverse Frame Spacing of 6ft (1.83m) each
- * Flush-Deck with Recess Bollards
- * 12ft (3.66m) -high Break-Waters on the Bow with Storm Rails
- * Salvage Plugs in Manhole Covers
- * Flushed manholes marked with identification of each tank
- * Flush Access Ladder to Deck
- * Additional Bollard on the Bow
- * Fendering
- * Storage Cabinet for Documents behind the Breakwaters
- * Emergency Tow-Set up clipped on Breakwaters from bow to stern arrangement with luminous float
- * Chain Bridle Assembly includes:
 - SMIT Brackets (tow connection point)
 - Master Links
 - Towing Shackles
 - Closed Chocks (capped fairleads)
 - Towing bridle legs (chain)
 - Chain "pigtail"
 - Tow Plate (triangular plate)

** This vessel specification is given in good faith & assumed to be correct. Details given are without guarantee.

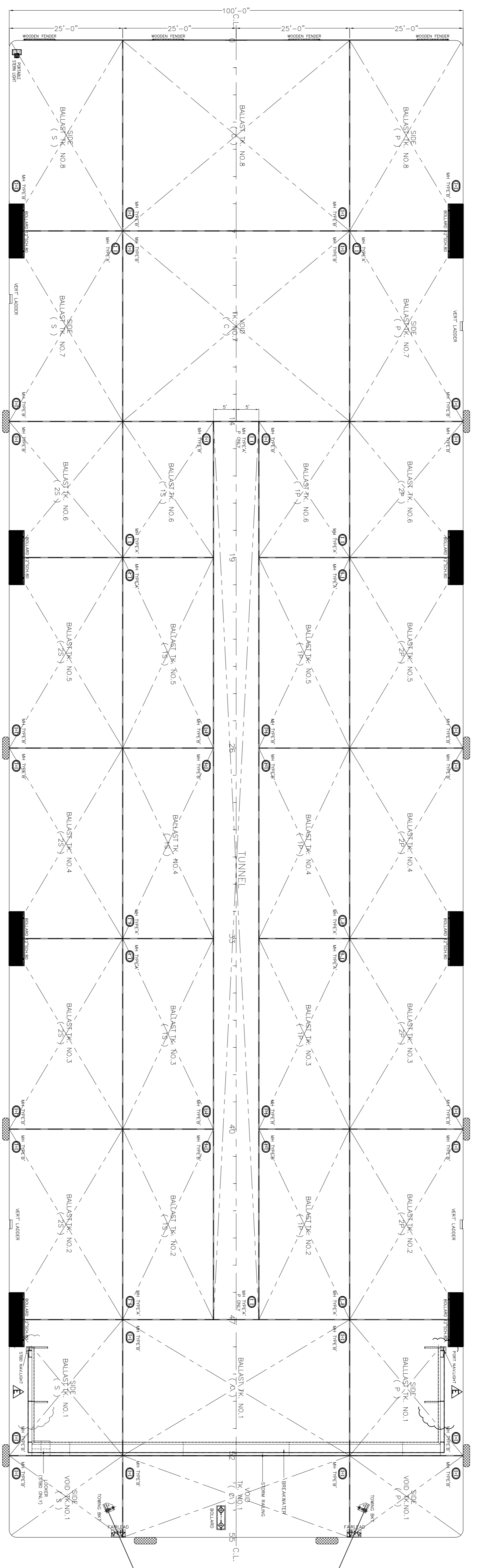
** Owners reserved the right to amend the specifications without notification.

Call 65.6309.0555
Fax 65.6222.7848
Co.Reg.No. 200715754M

Mail 15 Hoe Chiang Road Tower Fifteen #12-05 Singapore 089316
Web www.terasoffshore.com



PROFILE
Scale 1:150



DECK PLAN
Scale 1:150

PRINCIPAL	DIMENSION
LENGTH O.A	330' - 0"
BEAM MLD	100' - 0"
DEPTH MLD	20' - 0"
DECK LOADING	15 T/M2

DATE	REVISION	DESCRIPTION OF CHANGE	BY
08.04.2005	E	AMENDED AS PER OWNER COMMENT	INTSDF
04.04.2005	D	AMENDED AS PER OWNER COMMENT	INTSDF
16.02.2005	B	AMENDED AS PER OWNER COMMENT	INTSDF
16.02.2005	A	AMENDED AS PER OWNER COMMENT	SS

LABROY SHIPBUILDING & ENGINEERING PTE LTD
 1 WAREHOUSING ROAD, #01-21, WAREHOUSE CENTRAL, URBAN 3, SINGAPORE 099551
 TEL : 65459000 FAX : 3734444
 E-mail : info@labroy.com.sg

PT. MANINDAH MUTIARA SHIPYARD
 A Shipyard (Business) Sdn Bhd (Publicly Listed) - Kuala Lumpur
 101, Jalan Mutiara, Mutiara Harbour, 47600 Telok Anson, Selangor, Malaysia
 Phone : (03) 8996 3986, 3982 Fax : (03) 8996 3981

Project :	330'x100'x20' BALLASTIBLE BARGE
Title :	GENERAL ARRANGEMENT
Drawn by :	MEJDA.F
Checked by :	K.S. TEO
Date :	03.02.05
Sheet No. :	1 OF 1
Scale :	1:150
Signature :	MEJ