



Teras Offshore

A subsidiary of Ezion Holdings Limited

TERAS 338

*Flat Top Ballastable Barge
330ft x 100ft x 20ft*



Specifications

Length:	330ft (100.61m)
Breadth:	100ft (30.48m)
Depth Moulded:	20ft (6.1m)
Deck Strength:	15 MT/M2
GRT/NRT:	4,843/ 1,453
Deadweight:	12,000MT

Call 65.6309.0555
Fax 65.6222.7848
Co.Reg.No. 200715754M

Mail 15 Hoe Chiang Road Tower Fifteen #12-05 Singapore 089316
Web www.terasoffshore.com



Teras Offshore

A subsidiary of Ezion Holdings Limited

General Specifications

GENERAL

Port of Registry/Flag	Singapore
Official Number	391482
Class	ABS
Notation	+A1, Barge
Built	2006, Taizhou Sanfu Ship Engineering Co., China

MINIMUM BREAKING STRENGTH FOR:

SMIT Towing Bracket 80 Tonnes
Towing Fairlead 80 Tonnes

ADDITIONAL FEATURES:

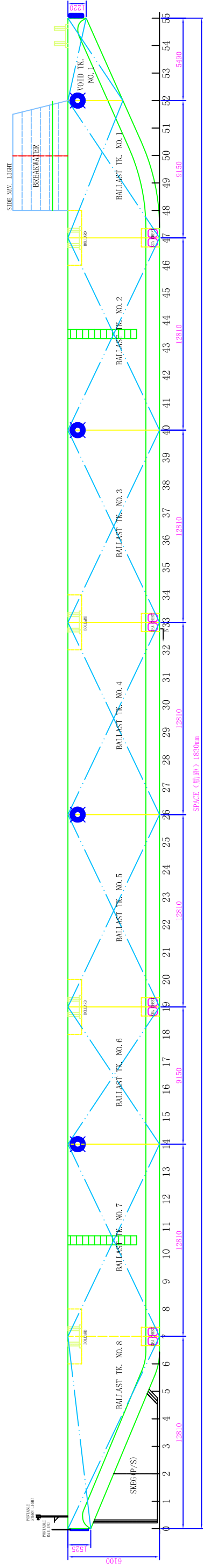
- * Clear Deck Working Area of 305ft (93.0m) by 92ft (28.05m)
- * WEB Longitudinal Frame Spacing of 1.8ft (0.55m) each
- * WEB Transverse Frame Spacing of 6ft (1.83m) each
- * Flush-Deck with Recess Bollards
- * 12ft (3.66m) -high Break-Waters on the Bow with Storm Rails
- * Remote-Control Water Intake
- * Salvage Plugs in Manhole Covers
- * Flushed manholes marked with identification of each tank
- * Flush Access Ladder to Deck
- * Additional Bollard on the Bow
- * Fendering
- * Storage Cabinet for Documents behind the Breakwaters
- * Chain Bridle Assembly includes:
 - SMIT Brackets (tow connection point)
 - Master Links
 - Towing Shackles
 - Closed Chocks (capped fairleads)
 - Towing bridle legs (chain)
 - Chain "pigtail"
 - Tow Plate (triangular plate)

** This vessel specification is given in good faith & assumed to be correct. Details given are without guarantee.

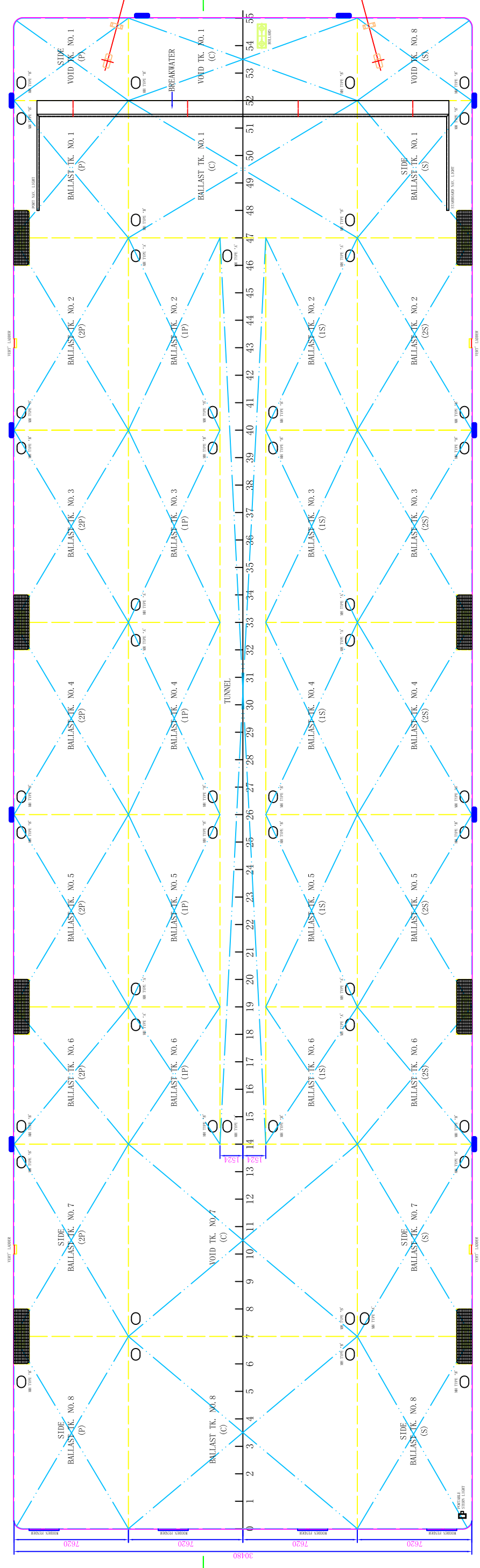
** Owners reserved the right to amend the specifications without notification.

Call 65.6309.0555
Fax 65.6222.7848
Co.Reg.No. 200715754M

Mail 15 Hoe Chiang Road Tower Fifteen #12-05 Singapore 089316
Web www.terasoffshore.com



PROFILE (侧面图)



DECK PLAN (主甲板)

PRINCIPAL DIMENSION
 LENGTH O. A. 300'-0" (100650mm)
 BEAM MLD 100'-0" (30480mm)
 DEPTH MLD 20'-0" (6100mm)
 DECK LOADING 15T/M2

330' x 100' x 20' BALLASTSIBLE BARGE		图号/rawing No. SF0112-G-1	
GENERAL		ARRANGEMENT	
Initial design 初步设计	Detail design 详细设计	Production design 生产设计	Finished plan 完工图
Mark 标记	数量 修改单号	Sign. 签字	Date 日期
Drawn 绘制	Checked 校对	Rechecked 复核	Approved 审定
Mass (kg) 重量 (kg)	Scale 比例	Sheet 页	of 共
TAIZHOU SANFU SHIP ENGINEERING CO., LTD 泰州三福船舶工程有限公司			