



Teras Offshore

A subsidiary of Ezion Holdings Limited

TERAS 339

*Flat Top Ballastable Barge
330ft x 120ft x 20ft*



Specifications

Length: 330ft (100.61m)

Breadth: 120ft (36.58m)

Depth Moulded: 20ft (6.1m)

Deck Strength: 15 MT/M2

GRT/NRT: 5,809 / 1,742

Deadweight: 13,500MT

Call 65.6309.0555
Fax 65.6222.7848
Co.Reg.No. 200715754M

Mail 15 Hoe Chiang Road Tower Fifteen #12-05 Singapore 089316
Web www.terasoffshore.com



Teras Offshore

A subsidiary of Ezion Holdings Limited

General Specifications

GENERAL

Port of Registry/Flag	Singapore
Official Number	391483
Class	Lloyd's Register
Notation	+100A
Built	2005 / Labroy Shipbuilding & Engineering Pte Ltd., Singapore

MINIMUM BREAKING STRENGTH FOR:

SMIT Towing Bracket 80 Tonnes
Towing Fairlead 80 Tonnes

ADDITIONAL FEATURES:

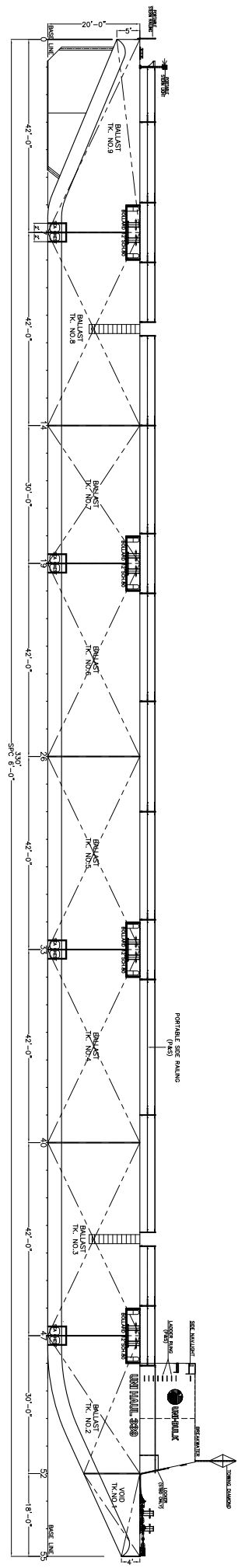
- * Clear Deck Working Area of 309ft (94.20m) by 113ft (34.45m)
- * WEB Longitudinal Frame Spacing of 1.78ft (0.54m) each
- * WEB Transverse Frame Spacing of 5.76ft (1.76m) each
- * 12ft (3.66m) -high Break-Waters on the Bow with Storm Rails
- * Salvage Plugs in Manhole Covers
- * Flushed manholes marked with identification of each tank
- * Flush Access Ladder to Deck
- * Additional Bollard on the Bow
- * Fendering
- * Storage Cabinet for Documents behind the Breakwaters
- * Emergency Tow-Set up clipped on Breakwaters from bow to stern arrangement with luminous float
- * Chain Bridle Assembly includes:
 - SMIT Brackets (tow connection point)
 - Master Links
 - Towing Shackles
 - Closed Chocks (capped fairleads)
 - Towing bridle legs (chain)
 - Chain "pigtail"
 - Tow Plate (triangular plate)

*** This vessel specification is given in good faith & assumed to be correct. Details given are without guarantee.*

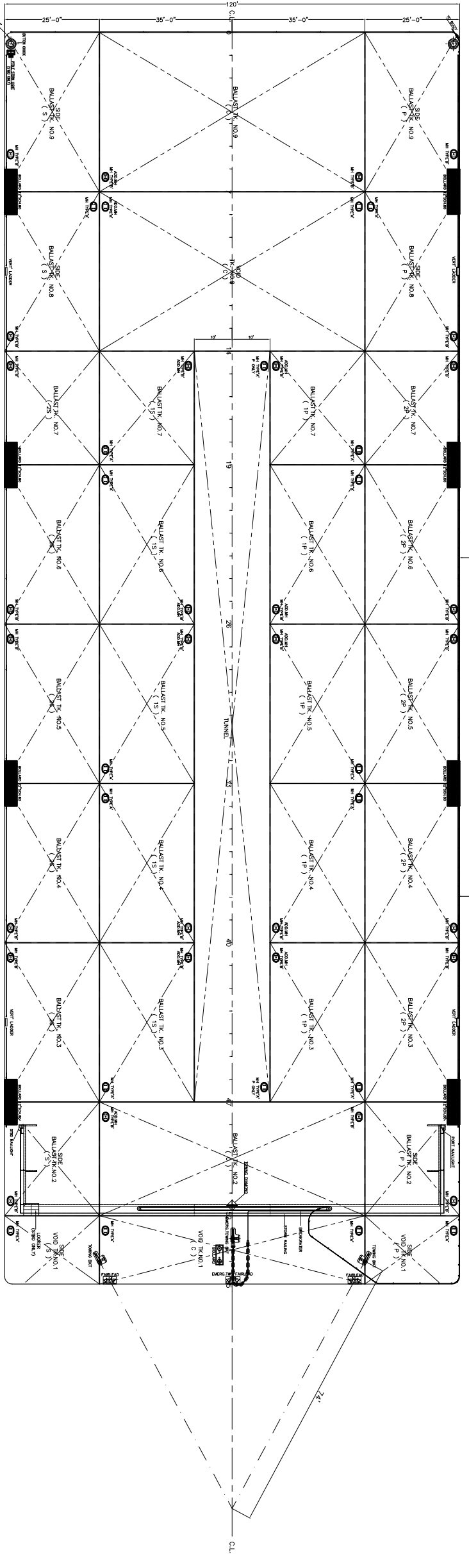
*** Owners reserved the right to amend the specifications without notification.*

Call 65.6309.0555
Fax 65.6222.7848
Co.Reg.No. 200715754M

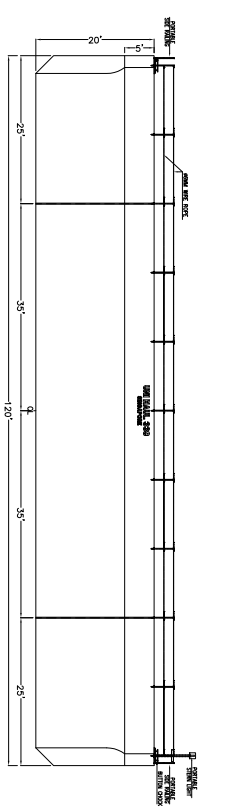
Mail 15 Hoe Chiang Road Tower Fifteen #12-05 Singapore 089316
Web www.terasoffshore.com



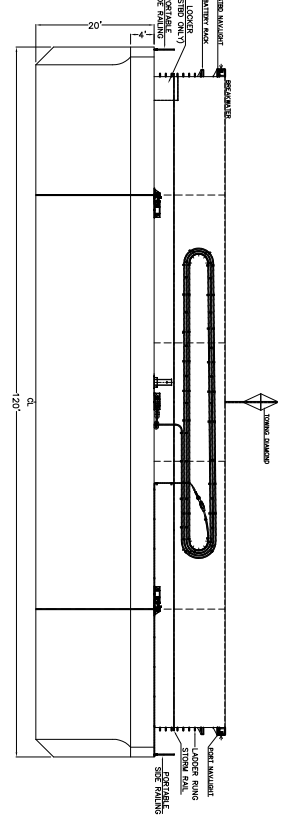
PROFILE



DECK PLAN



AFT VIEW
(LKG PWD)



FWD VIEW
(LKG AFT)

PRINCIPAL	DIMENSION
LENGTH O.A	330' - 0"
BEMM WLD	120' - 0"
DEPTH WLD	20' - 0"
DECK LOADING	15 T/M2

DATE	REASON FOR ISSUE	REV	BY
15.08.2005	AS BUILT	H	Issued
20.06.2006	ISSUED AS PROGRESS	E	Issued
08.04.2006	AMENDED AS PER OWNER COMMENT	F	Issued
04.04.2006	AMENDED AS PER OWNER COMMENT	G	Issued
23.03.2006	AMENDED AS PER OWNER COMMENT	B	Issued
16.02.2005	AMENDED AS PER CLASS COMMENT	A	Issued

This drawing / specification is the property of who is responsible for the design and construction of the vessel and shall remain the property of the owner. No part of this drawing / specification may be reproduced or transmitted in any form or by any means electronic or mechanical, including photocopying, recording, or by any information storage and retrieval system, without the prior written permission of the owner.

LABROY SHIPBUILDING & ENGINEERING PTE LTD
 1 MARINE SQUARE #11-23 WOOD BREEZE CENTRE, LORONG 8, SINGAPORE 080203
 TEL: 5215900 FAX: 5714414
 E-mail: info@labroy.com.sg

PT. NAWANDAH MUTIARA SHIPYARD
 PT. NAWANDAH MUTIARA SHIPYARD
 No. 1079, Jln. Raya, 20061, Kuala Lumpur, Malaysia

Title :		H 547	
Project :		GENERAL ARRANGEMENT	
Drawn by :		MELDIAF	
Date :		03.02.05	
Checked by :		K.S.TEO	
Date :			
DWG No. :		LSE547/G-1	
Scale :		1:200	
Sheet No. :		1 of 1	
REV :		H	

H
G
F
E
D
C
B
A

