



Teras Offshore

A subsidiary of Ezion Holdings Limited

TERAS TRANSPORTER 2

Flat Top Ballastable Barge

360ft x 120ft x 20ft



Specifications

Length:	360ft (109.76m)
Breadth:	120ft (36.58m)
Depth Moulded:	20ft (6.1m)
Deck Strength:	15 MT/M2
Gross Tonnage:	6,452MT/1,935MT
Deadweight:	14.500MT

Call 65.6309.0555
Fax 65.6222.7848
Co.Reg.No. 200715754M

Mail 15 Hoe Chiang Road Tower Fifteen #12-05 Singapore 089316
Web www.terasoffshore.com



Teras Offshore

A subsidiary of Ezion Holdings Limited

General Specifications

GENERAL

Port of Registry/Flag	Singapore
Official Number	392183
Class	ABS
Notation	+ A1, Barge
Built	2005 / Labroy Shipbuilding and Engineering Pte Ltd., Singapore

MINIMUM BREAKING STRENGTH FOR:

SMIT Towing Bracket 80 Tonnes
Towing Fairlead 80 Tonnes

ADDITIONAL FEATURES:

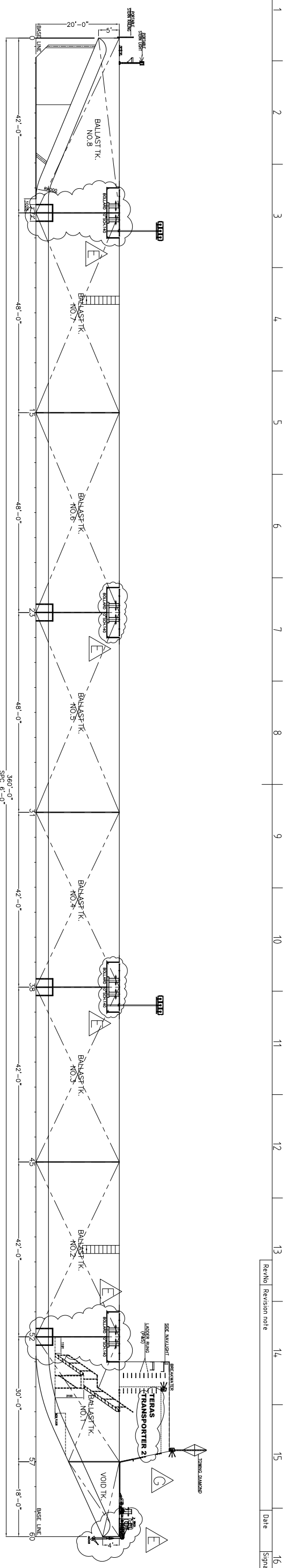
- * Clear Deck Working Area of 310ft (94.51m) by 113ft (34.45m)
- * WEB Longitudinal Frame Spacing of 1.78ft (0.54m) each
- * WEB Transverse Frame Spacing of 5.76ft (1.76m) each
- * Flush-Deck with Recess Bollards
- * 12ft (3.66m) -high Break-Waters on the Bow with Storm Rails
- * Remote-Control Water Intake
- * Salvage Plugs in Manhole Covers
- * Flushed manholes marked with identification of each tank
- * Flush Access Ladder to Deck
- * Additional Bollard on the Bow
- * Booby Hatch for emergency escape from the pump room
- * Fendering
- * Fairlead
- * Control room in the inner wall of the Breakwaters
- * Emergency Tow-Set up clipped on Breakwaters from bow to stern arrangement with luminous float
- * Chain Bridle Assembly includes:
 - SMIT Brackets (tow connection point)
 - Master Links
 - Towing Shackles
 - Closed Chocks (capped fairleads)
 - Towing bridle legs (chain)
 - Chain "pigtail"
 - Tow Plate (triangular plate)

** This vessel specification is given in good faith & assumed to be correct. Details given are without guarantee.

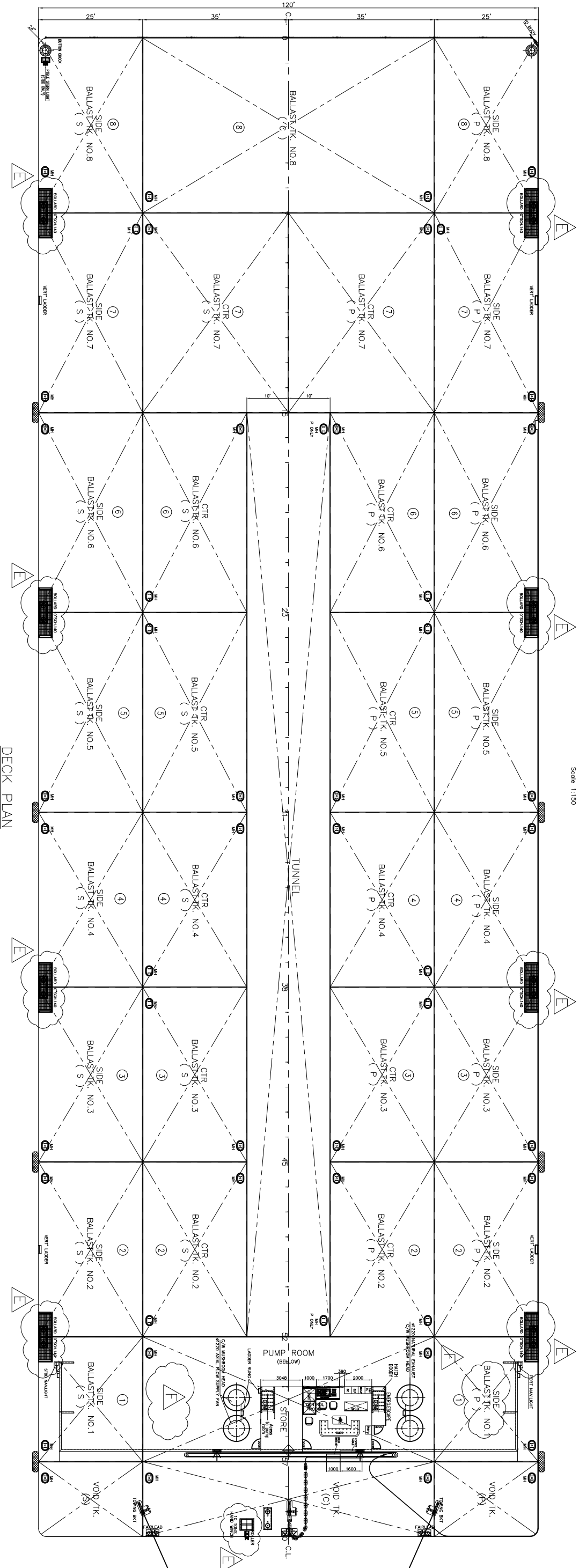
** Owners reserved the right to amend the specifications without notification.

Call 65.6309.0555
Fax 65.6222.7848
Co.Reg.No. 200715754M

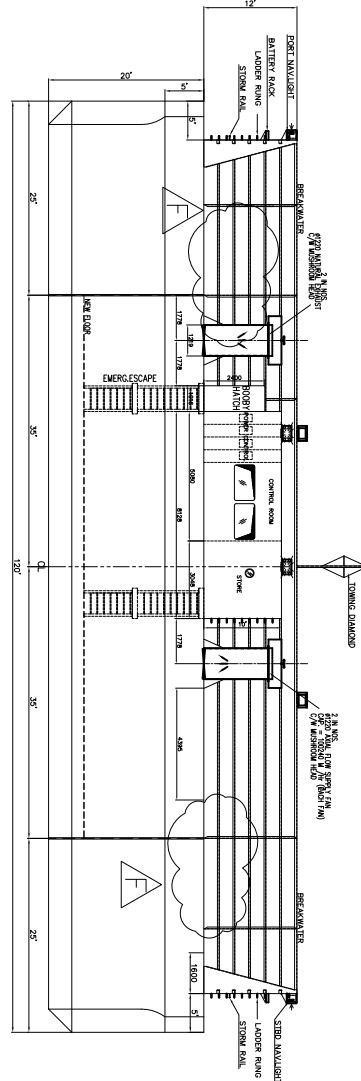
Mail 15 Hoe Chiang Road Tower Fifteen #12-05 Singapore 089316
Web www.terasoffshore.com



PROFILE
Scale 1:150



DECK PLAN
Scale 1:150



AFT VIEW
(LKG FWD)

PRINCIPAL DIMENSION

LENGTH O.A	360' - 0"
BEAM MLD	120' - 0"
DEPTH MLD	20' - 0"
DECK LOADING	15 T/M2

25.05.10	REVISED AS PER OWNER COMMENTS. E-MAIL. DD. MAY 21, 2010	G	OK/AM
18.05.10	REMOVED GEN-SET & CONTAINER AS PER OWNER COMMENTS. E-MAIL. DD. MAY 16, 2010	F	GRACE
27.02.08	REVISED AS PER OWNER COMMENTS. E-MAIL. DD. MAY 16, 2010	E	QC
13.01.06	REVISED LAYOUT AS PER YARD COMMENTS.	C	AFS
11.01.06	REVISED CONTROL ROOM AS PER OWNER COMMENT	B	ADJ
27.10.2005	ADDED Q.C. BRD AT NO.8 CTR BALLAST TK. STORE & CONTROL ROOM AT BREAKWATER	A	TRIM/DGF

DATE

MODIFICATION DETAIL / DESCRIPTION OF CHANGE

REV BY

LABORY SHIPBUILDING & ENGINEERING PTE LTD
 1 MARINE SQUARE #11-23, MARINA TRADE CENTRE, LEVEL 6, SINGAPORE 099253
 TEL : 54519000 FAX : 3774444
 E-MAIL : info@labory.com.sg

PT. MAWANDAH MUTIARA SHIPYARD
 & Regional Offices (Sulawesi) 1 Tanjung Selayar - Pulau Selayar
 Phone : (0778) 39866, 39862 Fax : (0778) 39861

Project :	360' x 120' x 20' BALLASTSIBLE BARGE
Title :	GENERAL ARRANGEMENT
Drawn by :	Gaith
Checked by :	K.S.TEO
Date :	07.08.05
Scale :	1:150